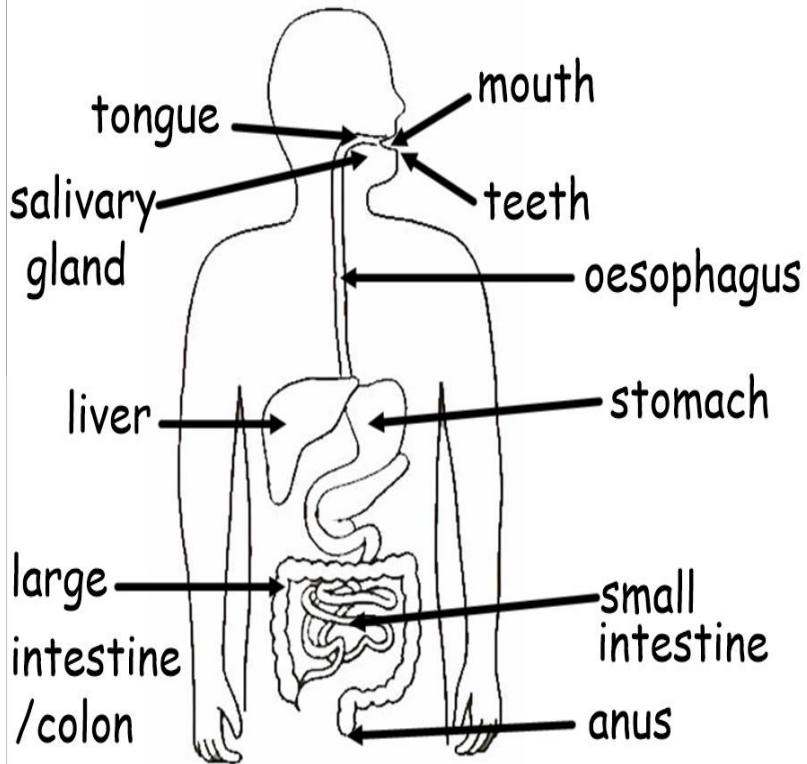
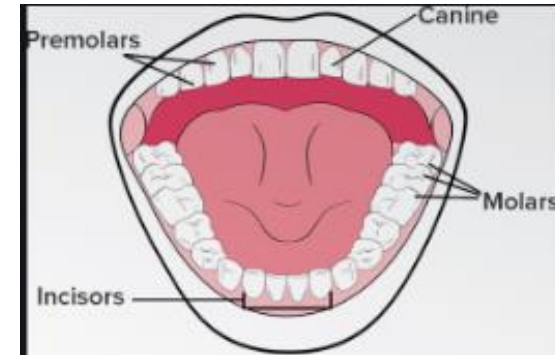


Year 4 Knowledge Fact Sheet - Digestive System



Key functions of the organs in the digestive system:

Organ	Function
mouth	digestion begins when food and drink enters your body
salivary gland	produces saliva (spit)
oesophagus	tube which moves food from mouth to stomach
stomach	food broken down by acid and being churned around
liver	makes bile
pancreas	makes digestive juices with enzymes
large intestine	water absorbed in the colon . Faeces formed.
small intestine	nutrients absorbed
anus	faeces exit your body
digestion	process by which food and drink are broken down



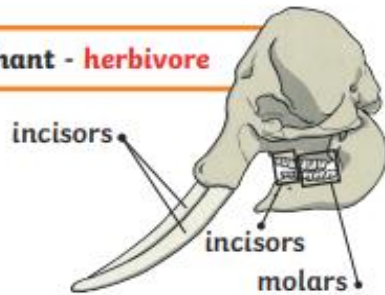
Incisors are used for biting and cutting food.

Premolars are used for holding and crushing food.
Molars chew and grind up food, working with your tongue to prepare food for swallowing.

Canines are used for ripping and tearing food.

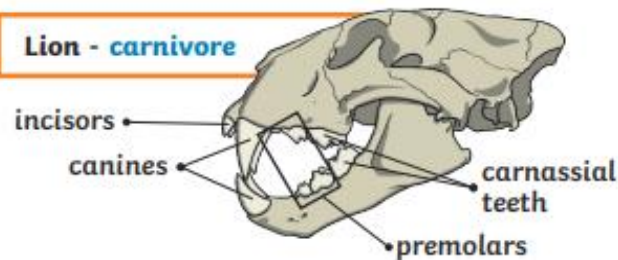
The teeth of an animal are designed to eat different foods depending on the diet of the animal. Examples of a **herbivore**, a **carnivore** and an **omnivore** skull:

Elephant - herbivore



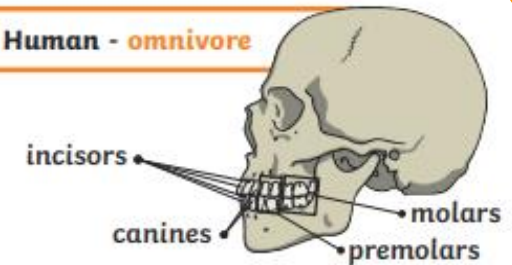
Herbivore - eats plants

Lion - carnivore



Carnivore - eats meat

Human - omnivore



Omnivore - eats plants and meat